

ABELS

RESIDENTIAL



2 Winterfold Close, London, SW19 6LE

£1,950 Per month

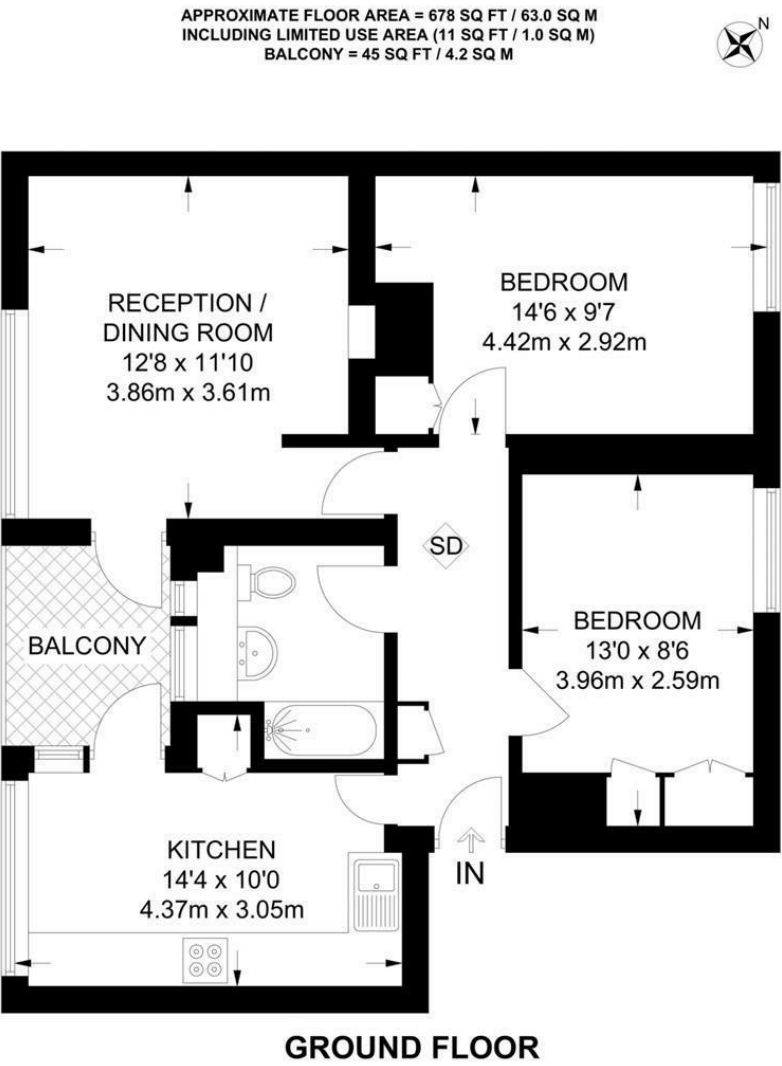
Abels Residential are pleased to present this modern two double bedroom apartment in Winterfold Close in Southfields.

Situated on the raised ground floor this property benefits from views over the communal garden area, a secure entry system, off-street parking (local permit required), gas central heating and double glazing throughout.

Comprising of two large double bedrooms with ample built in storage, family bathroom, large fully fitted modern kitchen with a door leading to a private balcony overlooking the communal garden - and there is also access to the balcony from the reception room which offers good natural light.

Located only a short walk to Southfields with its range of shops, bars and restaurants and tube station giving access to the District line. The property is also just a short stroll from the open spaces of Wimbledon Park with the Famous 'All England Lawn Tennis & Croquet Club' just moments from the heart of Southfield village.

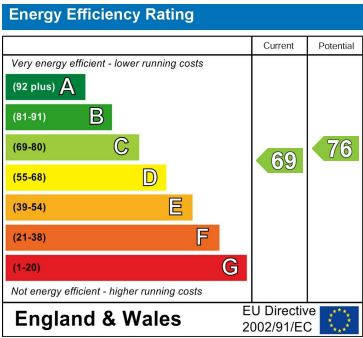
Floor Plan



Area Map



Energy Efficiency Graph



These particulars, whilst believed to be accurate are set out as a general outline only for guidance and do not constitute any part of an offer or contract. Intending purchasers should not rely on them as statements of representation of fact, but must satisfy themselves by inspection or otherwise as to their accuracy. No person in this firms employment has the authority to make or give any representation or warranty in respect of the property.